

# Site Profile

## Alabama Site Selection Database

### I-565 Business Park

City: Huntsville      County: Limestone  
MSA: Huntsville, AL



| General Site Data          |                       |
|----------------------------|-----------------------|
| Total Acres                | 26                    |
| Available Acres            | 22                    |
| Additional Available       |                       |
| Largest Tract              | 10                    |
| Smallest Tract             | 1                     |
| Protective Covenants       | Yes                   |
| Phase 1 Environmental      |                       |
| Preliminary Geotechnical:  |                       |
| Topography                 | Slight Rolling        |
| Preliminary Wetlands       |                       |
| Assessment:                |                       |
| Ecological Review:         |                       |
| Cultural Resources Review: |                       |
| Zoning                     | Business & Commercial |
| Previous Use               | Agriculture           |
| Previous Use Description   | agriculture           |

|                                |                         |
|--------------------------------|-------------------------|
| Site Id: 4017                  |                         |
| Street Address                 | I-565 Greenbrier Exit 3 |
| Nearest City                   | Huntsville              |
| Within City Limits             | Yes                     |
| Zip Code                       | 35756                   |
| Latitude                       | 34.6410                 |
| Longitude                      | -86.8439                |
| Located in Industrial Park     | Yes                     |
| Park Name                      | I-565 Business Park     |
| Within Enterprise Zone         | No                      |
| Within Favored Geographic Area | No                      |
| Within Renewal Community       | No                      |

| Transportation              |                     |
|-----------------------------|---------------------|
| Rail Service                |                     |
| Provider:                   |                     |
| Track Status:               | Not Available       |
| Provider #2:                |                     |
| Track Status:               |                     |
| Navigable Waterway          | Tennessee River     |
| Dock Facility:              | Port 11 to 25 miles |
| Nearest Commercial Air City | Huntsville, AL      |
| Miles to Nearest Service:   | 3                   |

| Highways     |              |
|--------------|--------------|
| Highway Type | Highway Name |
| Interstate   | I-565        |
| Interstate   | I-65         |

| Utilities                           |                               |
|-------------------------------------|-------------------------------|
| Natural Gas                         |                               |
| Provider:                           | Huntsville Utilities          |
| Status:                             | Existing Connection           |
| Size of Main:                       | 6 in.                         |
| Main PSI:                           |                               |
| Water                               |                               |
| Provider:                           | Limestone Co. Water Authority |
| Status:                             | Existing Connection           |
| Size of Main:                       | 12 in.                        |
| Sewer                               |                               |
| Provider:                           | City of Huntsville            |
| Status:                             | Existing Connection           |
| Size of Main:                       | 20 in.                        |
| Electricity                         |                               |
| Provider #1:                        | Athens Utilities              |
| Status:                             | Existing Connection           |
| Service to Property (Distribution): |                               |
| Transmission:                       |                               |
| Provider #2:                        |                               |
| Telecommunications                  |                               |
| Provider:                           | AT&T                          |
| Fiber Optics:                       | Yes                           |
| Redundancy:                         | No                            |
| xDSL Available:                     |                               |

| Price                    |                |
|--------------------------|----------------|
| Sale Price               | \$2,350,000.00 |
|                          | Total          |
| Land Lease Rate (Annual) |                |
| Negotiable?              | Yes            |
| Date Quoted              | Jan 11, 2010   |
| Price Comments           |                |

# Site Profile

## Alabama Site Selection Database

**I-565 Business Park**

City: Huntsville

County: Limestone  
MSA: Huntsville, AL

General Comments

*Site information is current as of 1/11/10*

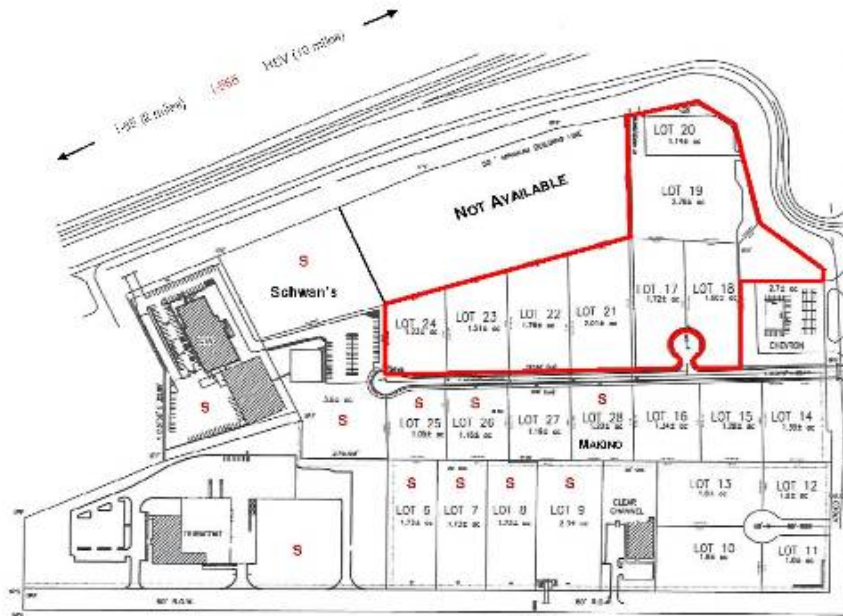
# Site Profile

## Alabama Site Selection Database

### I-565 Business Park

City: Huntsville

County: Limestone  
MSA: Huntsville, AL



15 acres +/-  
\$2,350,000

#### Distance

|                |         |
|----------------|---------|
| Madison, AL    | 5 mi E  |
| Huntsville, AL | 15 mi E |
| Decatur, AL    | 18 mi W |
| Athens, AL     | 15 mi W |
| Cullman, AL    | 25 mi S |
| Harbelle, AL   | 15 mi S |
| Birmingham, AL | 80 mi S |
| Nashville, AL  | 90 mi N |

This information has been secured from sources we believe to be reliable; however, we make no representation or warranties, expressed or implied, as to the accuracy of the information.

Economic Development Partnership of Alabama  
www.edpa.org

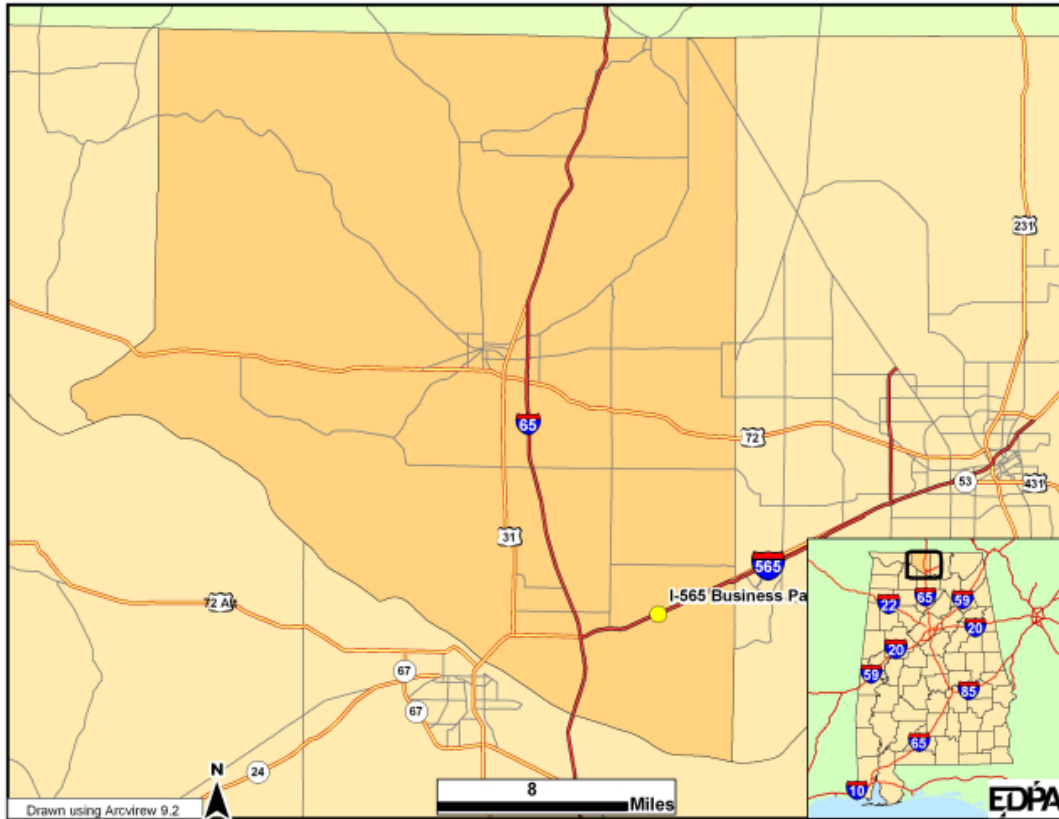
# Site Profile

## Alabama Site Selection Database

### I-565 Business Park

City: Huntsville

County: Limestone  
MSA: Huntsville, AL



This information has been secured from sources we believe to be reliable; however, we make no representation or warranties, expressed or implied, as to the accuracy of the information.

Economic Development Partnership of Alabama  
www.edpa.org